

HI-TOP CAMPER VAN

USER MANUAL



www.exmouthcamperhire.com.au

Hi-Top Camper & Luxury Motor Home Inventory List

Standard for 2 pax per hire

- * Camper Information folder, local maps & Cape Range Visitors folder
- * Throw cushions
- * Inside floor mat
- * LED rechargeable torch with 12 volt & 240 volt chargers
- * Beach umbrella
- * Dry bag
- * Outdoor table
- * Camp Chairs
- * Extension lead
- * Hose with connectors for tap
- * Ice brick
- * Mallet/pegs (awning)
- * Square bucket
- * Dust pan & Brush
- * 4 shopping bags (Exmouth supermarkets are plastic free)
- * Soft, 6 pack esky, 2 stubby holders
- * Clothes pegs & rope for clothes line
- * 4 Dinner plates
- * 4 side plates
- * 4 bowls
- * 2 wine glasses
- * 2 drinking cups

- * 2 coffee mugs
- * Large chopping knife
- * 2 Steak Knives
- * 4 butter knives, forks & dessert spoons
- * 2 tea spoons
- * Cutlery tray
- * Medium fry pan
- * 2 pots (small and medium)
- * Trivet (for hot pots)
- * Gauze toaster
- * Grater/peeler
- * Can opener
- * Bottle opener
- * 2 boxes of matches
- * Plastic spoon, egg flip & tongs
- * Strainer
- * 2 mixing bowls (small and medium)
- * 2 small containers
- * Kettle
- * Alfoil/Gladwrap
- * Cutting board
- * Dishwashing liquid
- * Chux/Scourer/dish brush
- * Salt/pepper

- * Kitchen Tidy Bags
- * Salt & Hard Water Soap (Day & Night brand)
- * 2 tea towels, hand towel
- * 2 face washers
- * 2 personal towels
- * 2 beach towels
- * 2 pillows
- * Queen Fitted & flat sheet set
- * Queen Doona
- * Light Winter rug (winter hires)
- * Double Mattress Protector (Luxury Motor Home only)
- * 40 litre WAECO brand industrial esky
- * 2 Snorkeling sets
- * Complimentary bottle of LPG gas
- * Single Butane Gas Cooker
- * 1 x Complementary Cylinder of Butane Gas
- * Cement Board
- * Toilet Chemical (Luxury Motor Home only)

PASSENGERS SIDE

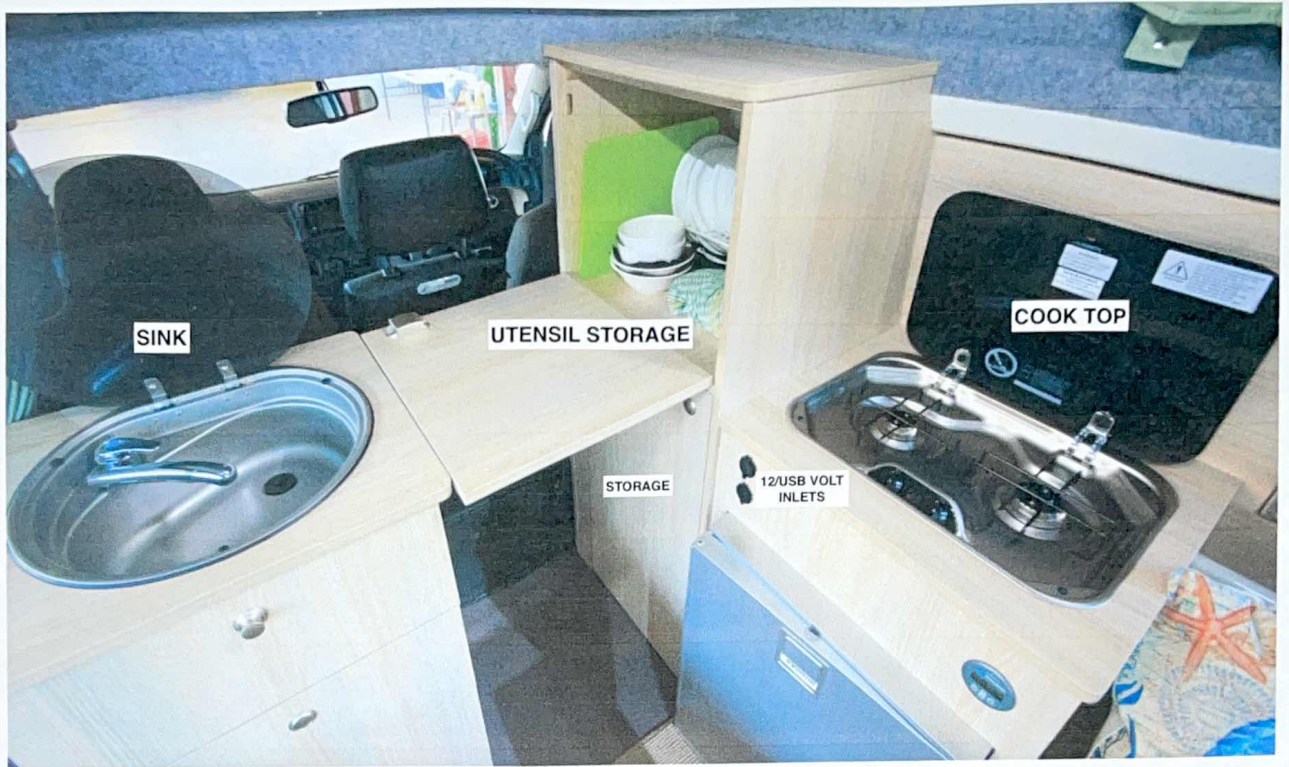


DRIVERS SIDE



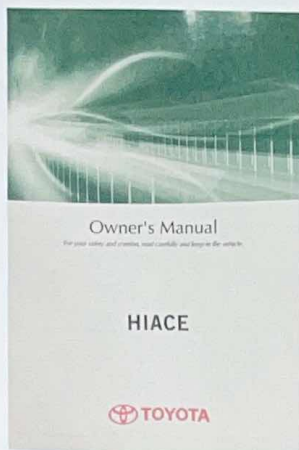












INSTRUMENT PANEL

Please refer to the Hiace owners Guide
in the Glove Box of the Camper.

AUTO WITH NAVIGATION

Please refer to the Hiace owners Guide
in the Glove Box of the Camper.



DRIVING SPECIFICATIONS

- Air-conditioned front cab
- Licensed seating for 2 adults
- Automatic transmission
- Unleaded petrol motor
- Power steering
- Electric windows
- Electric mirrors
- CD/Stereo
- Cruise control

VEHICLE FEATURES

- Model – 2018 Toyota Hiace Hi-Top
- Length – 4695 mm
- Width – 1695 mm
- Height – 2750mm
- Fuel Tank – 70 litres
- Gross Weight – 2800 kg



FRONT SEAT

Led torch with 12/240 volt chargers & Dry bag.
(ideal for keeping Camper keys sand free & dry)



FUEL POINT

Unleaded Petrol only.
FULL at pick up.
Return FULL at drop off.
(Fuel filler door opening on
drivers side)



SPARE TYRE TOOLS, JACK & FIRE EXTINGUISHER

The Spare tyre tools and Jack are located under the step into the Camper Van on the left side.

A Fire Extinguisher is located under the step of into the Camper Van on the right side.



FOLD DOWN TABLE

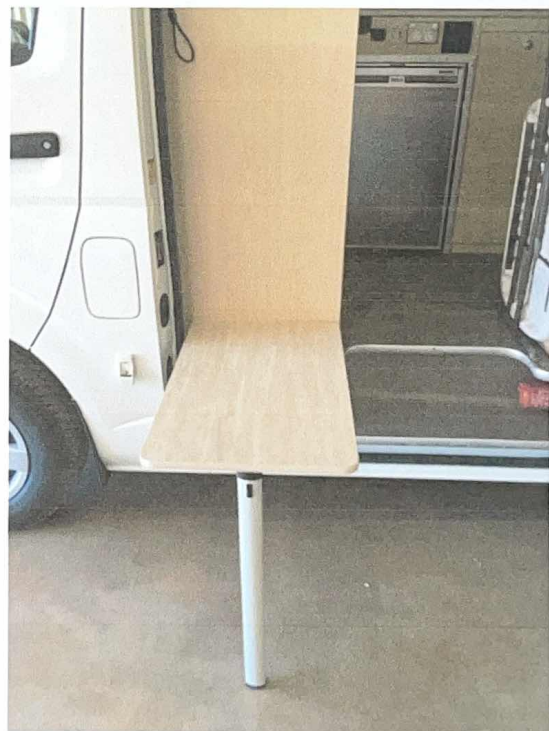
Located just inside sliding door as part of the Campers fit out.



FOLD DOWN TABLE CONTINUED :

Push Clip to release Table Leg.

When extended this leg will clip into place, then un loop elastic tie.





CONTROL PANEL

THIS BLACK PANEL ACTIVATES THE, 12 VOLT FAN IN THE REAR, FRIDGE, ALL LIGHTS, WATER PUMP (TAP), 12 VOLT/USB INLETS AND OUTSIDE AWNING LIGHT.

WHEN ACTIVATED, THE LIGHT WILL GLOW RED, AS IN PHOTO.

- * PLEASE KEEP THE LIGHTS, FRIDGE AND ACC (12 VOLT/USB) SWITCHES ON AT ALL TIMES (AS IN PHOTO).
- * PLEASE TURN THE OTHER SWITCHES ON & OFF AS YOU GO TO USE.

CHARGING POINTS

CIGARETTE LIGHTER PLUG

The Cigarette lighter plug located in the front drivers cab will charge personal devices with addition of a 12 volt USB cigarette lighter plug.

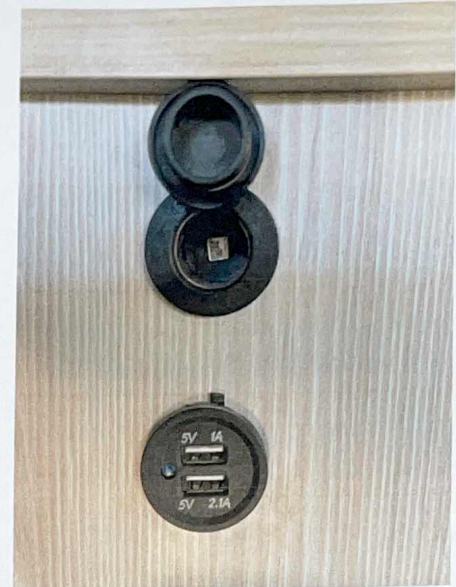
This is not provided for your hire.

12 VOLT/USB CHARGERS

These 2 charge points are located above the fridge and are used to charge personal devices (iPhones, laptops, iPads, torch, cameras) with out the reliance of a powered site in a caravan park.

BEFORE USE : please switch on at Control Panel “ACC”.

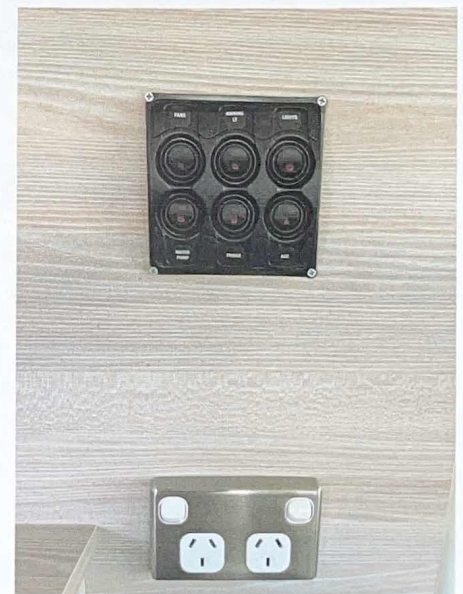
Ensure to turn off after use.



240 VOLT POWER POINT

This is located below the Control Panel. The 240 Volt Power Point which looks like a Household power point, will only work upon plugging into a powered site in the caravan park.

Any personal device can then be charged with a normal Australian household wire.



FRIDGE

The Fridge is 65 litres with small freezer compartment.

This stays on at all times, by leaving the “fridge” switch on, on the control panel

Opening is from the middle lever and gently pulling the left side.

Temperate is set on 4, please do not adjust.

The fridge operates off 240 volt power (caravan park powered site) and 12 volt power (Cape Range NP relying on solar).

It will stay charged and cold at all times during your hire with out having to

WATER & WATER PUMP USE

The water pump is connected to the 65 litre water tank in the Camper.

The water filler is located on the drivers side of the Camper Van around the middle. Key to open is on the main driving key.

The water pump switch is located on the Control Panel. Switch on when going to use, then off after use.

There is no gauge on this tank.

Cold water only.

Advising NOT TO DRINK the water out of the water tank unless boiled for vegetables or pasta/rice.

Water drains under the Camper Van directly below the sink which can be caught in a shallow bucket provided or just let it drain into the ground.
(Remember to remove the shallow bucket prior driving away)

Water to be filled at any Town or Caravan park drinking water stations.
DO NOT fill with boar water.

Boar water is hot, brown, salty water straight out of the ground usually found in remote camping areas, Coral Bay or National Parks.

***** If you completely drain the water tank, the water will need to be primed by sucking on the end of the tap inside the Camper.*

REAR FAN

Turn on the “Fan” switch on the control panel before use.

Fan can then be turned on at base with different settings to suit.

Manually manoeuvre fan to suit direction while turned off.

Turn fan off at control panel after use.

Flyscreens also feature around the Camper Van to open while stationary.

COOK TOP

Turn on gas bottle before use of 2 burner cook top.

To ignite burner use a match or lighter supplied.

Once finished cooking, turn off gas bottle, wipe over with a damp soft cloth and let cool for a minimum of 15 minutes before closing glass lid.

LIGHTS

“Lights” should already be turned on the control panel.

Each light around the Camper can be turned on and off manually.



BED

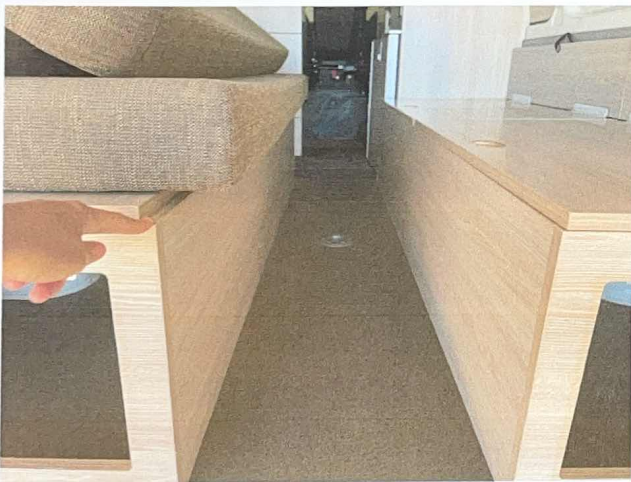
The bed is double in size once converted.

To convert, stack drivers side cushions over to the passengers side.

Then pull up the board via hand hole and extend from one side to the other positioning onto the lip of bench seat.

Repeat other side.

Cushions are then placed flat converting the dinette into a double bed, with linen provided.





GAS BOTTLE

This Gas is to be used for the inside 2 burner gas cook top.

The Campers gas bottle is located on the drivers side near the drivers door.

Open compartment and turn bottle on slightly



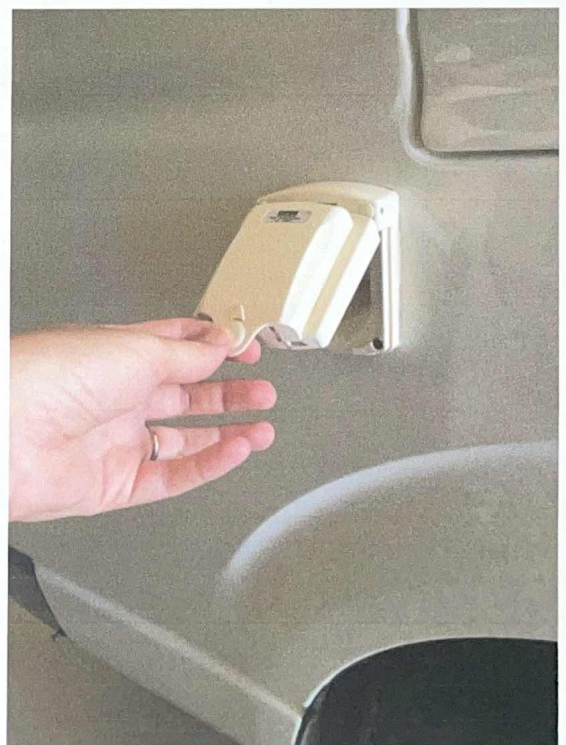
CARAVAN PARK INLET

240 Volt power outlet is located on the drivers side rear of the Camper Van.

Gently push on the top with your hand palm to help open the safety.

Extension Lead is located in the rear storage under bench seats, right side.

This is where you plug in upon a powered site in a caravan park.



AWNING

A 1.5 metre roll out bag awning features off the side of the Camper Van.

STEP 1 : Unzip awning bag.

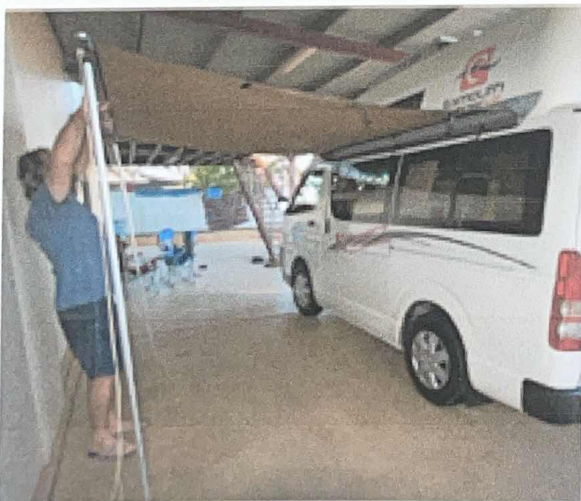
STEP 2 : loosen valcro tabs & slowly unroll awning until leading edge is exposed.



STEP 3 : Have one person holding middle of leading edge, over head, while the other begins to swing, twist, extend & lock vertical poles into a height position.

Now release horizontal poles by slightly twisting, extending & then locking into the small hole on each leading edge corner.

(The horizontal poles are located under awning close to Camper Van, as in photo below)



Gently twist and extend horizontal pole, swinging out on a 90 degree angle – now line up end with hole and twist pole to lock into position.



STEP 4 : Adjust height if need be and secure with guide ropes and pegs provided.

STEP 5 : Reverse awning procedure to pack away.

